



Save-N-Sync Help Manual

1993-2004 Peer Software Inc. All Rights Reserved.

Table of Contents

Part I Save-N-Sync	2
1 Contents	2
2 Tool Bar	2
3 Action Bar	4
4 Folder Selection	5
5 Folder Display	9
6 File Status	9
7 Status Displays	10
8 Task Selection	11
9 Global Options	15
Exceptions	15
Reporting	17
Settings	19
EOFM	20
Application	21
10 Command Line Arguments	22
Command Line Arguments	22
11 Other Features	29
Message Dialog	29
Warning Dialog	30
Shortcuts	30
12 Product Information	31
Product Levels	31
Registration	32
License	34
Part II Main Menu	36
Index	38

1 Save-N-Sync

1.1 Contents

(See Next: [Registration](#))

Thank you for using Save-N-Sync. This product has been created in order to help you backup, synchronize, replicate, mirror, organize, restore and manage your data files and folders.

The following help topics are available: (For help using this Help file, Press F1)

- [Main Menu](#)
- [Tool Bar](#)
- [Action Bar](#)
- [Folder Selection](#)
- [Folder Display](#)
- [File Status](#)
- [Status Displays](#)
- [Global Options: Exceptions](#)
- [Global Options: Reporting](#)
- [Global Options: Settings](#)
- [Global Options: EOFM](#)
- [Global Options: Application](#)
- [Command Line Arguments](#)
- [Message Dialog](#)
- [Product Levels](#)
- [License](#)

Save-N-Sync Installations:

Save-N-Sync is shipped (downloaded) in a full installation program. To run, simply double click on the executable file from the explorer (or choose Start Menu Run option and the select the application).

Product Support

All support of Save-N-Sync products will be handled on our web site (www.peersoftware.com) support page or by sending email to our support box at support@peersoftware.com.

The manufacturer of Save-N-Sync makes no warranties, implied or otherwise, for use of this product. User assumes all responsibility for any data loss or damage.

1.2 Tool Bar

(See Next: [Action Bar](#))

The Tool Bar section allows you to quickly access most of the commonly used menu items. This section can be viewed/hidden by selecting/unselecting it under the [View Main Menu](#) item.

Standard



Save Settings

Allows you to save the current application settings as the default settings.

Run Now / Stop

Allows you to start and stop the currently selected Action.

Options

Allows you to view and edit the Global Options.

Help

Allows you to access this help file.

Corporate



New

Allows you to create a new SyncList.

Open

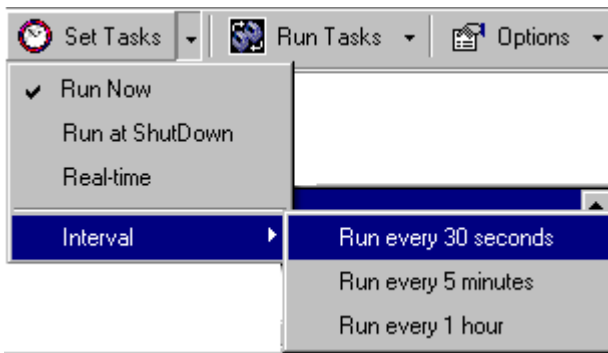
Allows you to open or reopen an existing SyncList.

Save

Allows you to save the current SyncList.

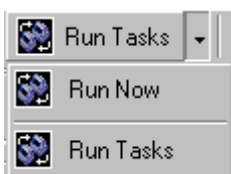
Set Tasks*

Allows you to view the task window, as well as create common tasks. These Tasks will be added to the [Task List](#).



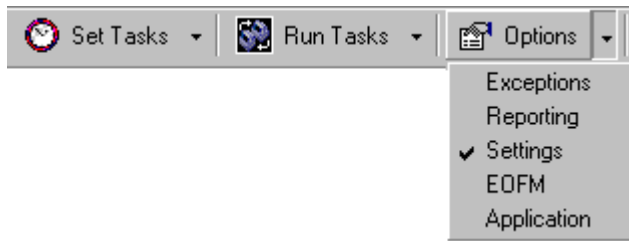
Run Tasks/Now*

Allows you to run either the items in the Task List, or a standard One Time Run of the selected folders.



Options*

Allows you to view and edit the Global Options.

**Help**

Allows you to access this help file.

Notes:

* These shortcuts can be accessed by clicking on the down arrow as well as right-clicking on the button.

1.3 Action Bar

(See Next: [Folder Selection](#))

The Action Bar allows you to select the action you wish to perform and displays a description of the current selection. This section can be viewed/hidden by selecting/unselecting it under the [View Main Menu](#) item.

**Action Selection**

Select the type of action that you wish to perform.

Action Description

Description of the current action selected.

Action Selections - Descriptions**Standard and Corporate**

Standard synchronization - Synchronize filtered files from source to target folders

Bi-directional synchronization* - Synchronize filtered files from source to target and copy any newer target files back to source folders.

Corporate

Replicate source to target - Synchronize filtered files from source to target folders and delete any files on target that do not have a matching source file

Replicate with exact match - Make filtered target files exactly match filtered source files including overwriting any newer files on target.

Delete matching target files*- Check filtered target folders for any files that match corresponding source files date, time and size; and delete the file off the target.

Delete filtered files* - Delete target files that match filtered criteria.

Delete empty folders* - Delete target folders that contain no files.

Notes

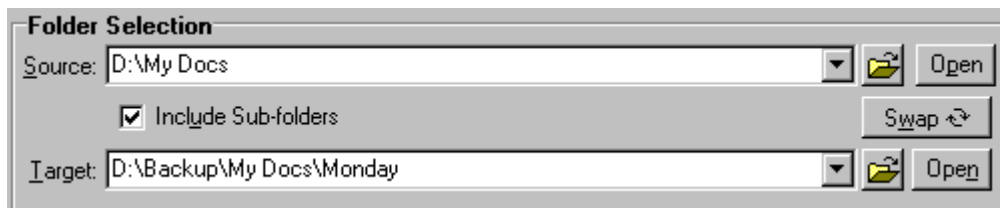
- These features can be set via [Command Line Arguments](#).
- *These options are not available when the '[Use Real-time Monitoring](#)' option is enabled.

1.4 Folder Selection

(See Next: [Folder Display](#))

Standard

The Folder Selection section allows you to select, browse for and view the source and target folders.



Source Folder

Select a Source Folder by typing the file path into the field provided, dragging and dropping from MS Windows Explorer into the field provided or by using the Select Source Button.

Select Source Button

This button opens a "Browse for Folder" dialog box: once this box has opened, locate your chosen Source folder, select it using the left mouse button, and click "OK."

Open Source Button

When this is selected a traditional MS navigation window is opened displaying the contents of whichever folder is currently shown in the Source Folder Selection.

Target Folder

Select a Target Folder by typing the file path into the field provided, dragging and dropping from MS Windows Explorer into the field provided or by using the Select Target Button.

Select Target Button

This button opens a "Browse for Folder" dialog box: once this box has opened, locate your chosen

Target folder, select it using the left mouse button, and click "OK."

Open Target Button

When this is selected a traditional MS navigation window is opened displaying the contents of whichever folder is currently shown in the Target Folder Selection.

Include Sub-folders

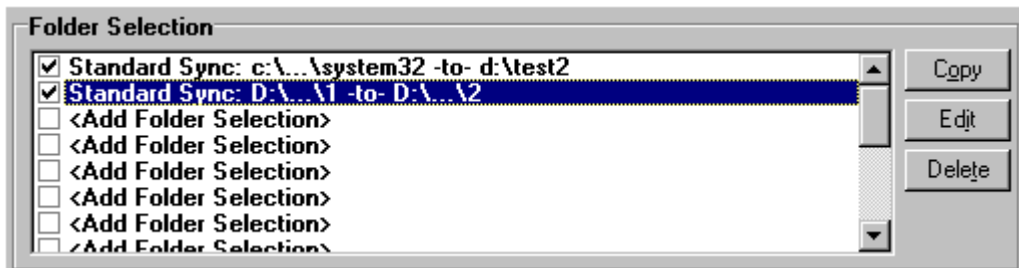
Option to enable/disable the including of sub-folders during the selected Action.

Swap Source and Target Folders

Allows you to quickly swap the source and target folder selections.

Corporate

The Folder Selection List section allows you to select multiple source and target folder selections. The [Corporate Level](#) allows 15 source/target combinations.



Add/Copy Button

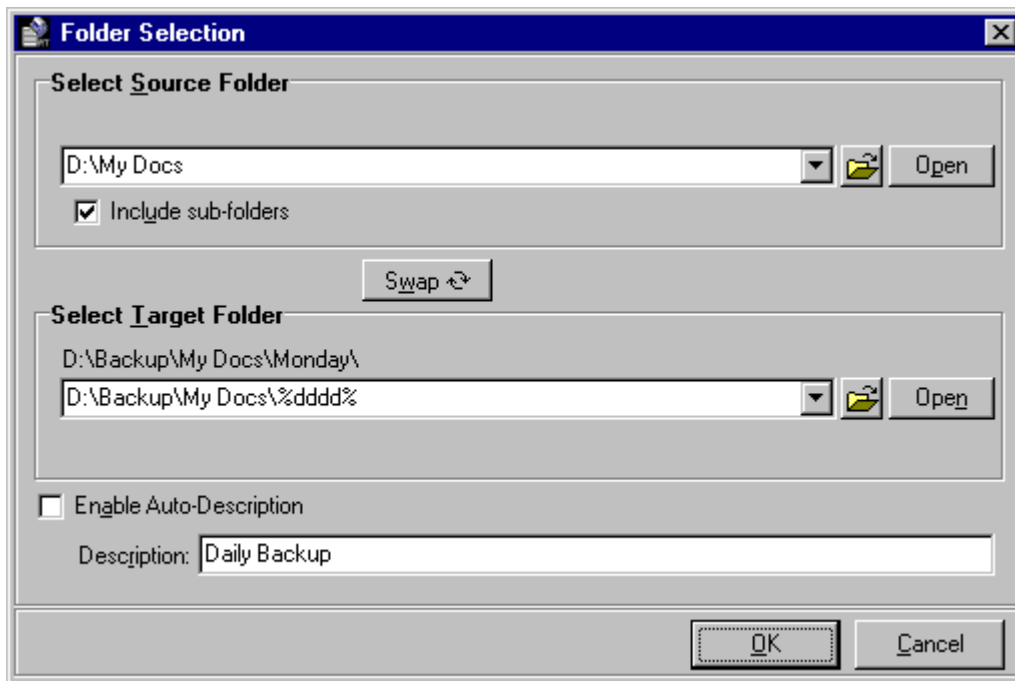
This button is toggled between Add and Copy depending on the attributes of the selected item. If the selected item does not have a source and target selected then the Add Button will be available. The Add Button will display a Folder Selection dialog where you can select a source folder, target folder, the option to include sub folders and a description for the source-target combination. If the selected item does have a source and target selected then the Copy Button will be available. The Copy Button will make a duplicate copy of the selected item and add it to the Folder Selection List.

Edit Button

The Edit Button will display a Folder Selection dialog where you can edit the source folder, target folder, the option to include sub folders and the description for the source-target combination. This button is enabled when the selected item has a source and target selected.

Delete Button

The delete Button will delete the selected item in the Folder Selection List. This button is enabled when the selected item has a source and target selected.



Source Folder

Select a Source Folder by typing the file path into the field provided, dragging and dropping from MS Windows Explorer into the field provided or by using the Select Source Button.

Select Source Button

This button opens a "Browse for Folder" dialog box: once this box has opened, locate your chosen Source folder, select it using the left mouse button, and click "OK."

Open Source Button

When this is selected a traditional MS navigation window is opened displaying the contents of whichever folder is currently shown in the Source Folder Selection.

Target Folder

Select a Target Folder by typing the file path into the field provided, dragging and dropping from MS Windows Explorer into the field provided or by using the Select Target Button.

Select Target Button

This button opens a "Browse for Folder" dialog box: once this box has opened, locate your chosen Target folder, select it using the left mouse button, and click "OK."

Open Target Button

When this is selected a traditional MS navigation window is opened displaying the contents of whichever folder is currently shown in the Target Folder Selection.

Include Sub-folders

Option to enable/disable the including of sub-folders during the selected Action.

Swap Source and Target Folders

Allows you to quickly swap the source and target folder selections.

Enable Auto-Description

When this is selected the Description will be automatically created based on your source and target

folder selections

Description

Specifies the Description to use in the Folder Selection List for the selected source-target combination.

Source-target Folder Path Variables*

Variable folder paths can be used to create:

- Dynamic archives for yearly, monthly, weekly and/or daily backups.
- Dynamic synchronization based on date.
- Dynamic synchronization based on logged on user or machine name.
- Dynamic synchronization based on personal folders or other variables read in from the registry.

The following variables can be used:

Date		%Date%
Time		%Time%
Date/Time		%DateTime%
Minute		%Minute%
Hour		%Hour%
Day		%Day%
Year		%Year%
Month/Year		%MonthYear%
Minute	(all formats)	%n, nn%
Hour	(all formats)	%h, hh%
Day	(all formats)	%d, dd, ddd, dddd, ddddd, ddddd%
Month	(all formats)	%m, mm, mmm, mmmm, mmmm%
Year	(all formats)	%y, yy, yyyy%
User Name variable		%UserName%
Computer Name variable		%ComputerName%
Windows Directory		%WinDir%
Windows		%Windows% (also %SystemRoot%)
System Temp Path		%Temp%
System Tmp Path		%Tmp%
System Drive Letter		%SystemDrive%
System 32 (WIN 9x/NT/00)		%System32%

Note: You can also use any variables that are located in the registry under:
HKEY_CURRENT_USER\Software\Microsoft\Windows\CurrentVersion\Explorer\Shell Folder

Depending upon the argument used, these folders will be dated, named after the currently logged user, named for the PC from which synchronization was launched, or based on a pre-determined variable stored out and read in from the registry.

Notes:

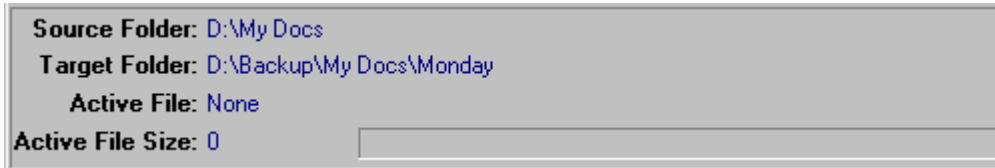
- Some of these features can be set via [Command Line Arguments](#).
- Folders can be dragged and dropped from MS Windows Explorer into these fields.
- The drop-down lists will be dynamically populated with source-target folders, as they are set.
- UNC names can be entered manually, or can be selected from the Network Neighborhood.

- UNC names will appear in the form: \\COMPUTER\SHAREDDEVICE\PATH
- *Variable Paths are only available in the [Corporate Level](#)

1.5 Folder Display

(See Next: [File Status](#))

The Folder Display section displays the active file for the current source and target folders being acted upon by the current action.



Source Folder

Display of the current source folder that the application is working on or will work on once started.

Target Folder

Display of the current target folder that the application is working on or will work on once started.

Active File

Display of the current file that the application is working on or will work on once started.

Active File Size

Display of the size of the current file that the application is working on.

File Progress Indicator

Display of the completion status of the current file that the application is working on.

Note: Right-Clicking on this area allows you to view the Log File as well as options.

1.6 File Status

(See Next: [Status Displays](#))

The File Status section displays statistics for the files acted upon during the current action.

Files Checked: 0	Message Count 0	Checked: 0 Bytes
Files Added: 0	Folders Checked: 0	Updated: 0 Bytes
Files Updated: 0	Folders Created: 0	Deleted: 0 Items
Files Excluded: 0	Folders Excluded: 0	Elapsed: 00:00:00

Files Checked

Display of the total number of files checked during the last run of the application.

Files Added

Display of the total number of files added during the last run of the application.

Files Updated

Display of the total number of files updated during the last run of the application.

Files Excluded

Display of the total number of files excluded during the last run of the application.

Message Count

Display of the total number of messages during the last run of the application.

If there are any messages you can click on this label to display the [Message Dialog](#).

Note: Clicking on this field bring up the Message Window properties in the Options.

Folders Checked

Display of the total number of folders checked during the last run of the application.

Folders Created

Display of the total number of folders created during the last run of the application.

Folders Excluded

Display of the total number of folders excluded during the last run of the application.

Checked

Display of the total number of bytes checked during the last run of the application.

Updated

Display of the total number of bytes updated during the last run of the application.

Deleted

Display of the total number of bytes deleted during the last run of the application.

Elapsed

Display of the Elapsed Time since the current process has started.

Note: Right-Clicking on this area allows you to view the Log File as well as options.

1.7 Status Displays

(See Next: [Task Selection](#))

The Status Display sections allows you to view Current Tasks, EOFM Status and Current Status. These sections can be viewed/hidden by selecting/unselecting the corresponding options under the [View Main Menu](#) item.

Standard

EOFM Status: EOFM Evaluation is Not Enabled
Current Status: Ready

Corporate

Current Tasks: <Click Here to Set Tasks>
EOFM Status: EOFM Evaluation is Enabled and Turned On
Current Status: Ready

Current Tasks ([Corporate Level Only](#))

This will report the number of tasks currently selected to run. It will also allow you to view the tasks in

the task window.

Note: When applicable, clicking on this field opens the [Task Selection Window](#).

EOFM Status*

This will display the current status of the Embedded Open File Manager.

Note: When applicable, clicking on this field opens the [EOFM](#) properties.

Current Status

This will display the current status of Save-N-Sync.

Note:

- *EOFM options are only available on Windows 2000/NT/XP Operating Systems.

1.8 Task Selection

(See Next: [Global Options: Exceptions](#))

*The Task Selection Screen is only available in the [Corporate Level](#).

The Task Selection screen allows for the creation, deletion, and modification of tasks to complete when Save-N-Sync is run. Each task applies to all of the items selected in the Folder [Selection](#). Tasks can then be run through the **Run Tasks** button on the main screen, or by exiting this screen with the [Run Tasks on Exit of this Dialog](#) checked.

Task Selections	Run every	Start Date	Start Time	End Date	End Time	Days of the week
Daily Timer			1:23:00 PM			Mo Tu We Th F...
Run at ShutDown						
Run Once		5/21/2003	1:23:00 PM			
Interval	5 minutes	5/21/2003	1:23:00 PM	5/13/2003	1:23:00...	Mo Tu We Th F...

Add Task

Add the specified task to the Task List. Users must first select the desired task and properties for the task before choosing the add it.

Update Task

Update the selected task in the task list with the task and properties currently chosen.

Delete Task

Delete the currently selected task from the task list.

Run Tasks on Exit

This option will enable the **OK** to immediately run the scheduled tasks on leaving this screen. The **OK** button will change to a **Run** button.

Run Tasks on Exit of this Dialog

OK/Run

Accept changes made and return to the main screen.

Note: If **Run Tasks on Exit** is selected, this button will run the selected filters, along with exiting the screen.

Cancel

Return to main screen without accepting changes.

Help

Bring up the help documentation for this screen.

Task Selection

The following Tasks are available in Save-N-Sync:

Run Now

Schedules the selected folders to synchronize immediately upon run.

Run Once

Schedules the selected folders to synchronize at the date and time specified.

Interval

Schedules the selected folders to synchronize on an interval once Save-N-Sync is run. See [modifiers](#) for more details.

Daily Timer

Schedules the selected folders to synchronize during a certain time of day and/or day of week. See [modifiers](#) for more details.

Real-Time

Schedules the selected folders to synchronize in Real-Time. See [modifiers](#) for more details.
Note: Real-Time can only detect changes on the local machine.

Task Selection Modifiers

Task Selection:	Run every: 1 second	Days of the week:
Run Now	Start Date: 5/21/2003	<input checked="" type="checkbox"/> Monday
Run Once	Start Time: 12:00:00 AM	<input checked="" type="checkbox"/> Tuesday
Interval	End Date: 12/26/1899	<input checked="" type="checkbox"/> Wednesday
Daily Timer	End Time: 12:00:00 AM	<input checked="" type="checkbox"/> Thursday
Real-time		<input checked="" type="checkbox"/> Friday
Run at ShutDown		<input checked="" type="checkbox"/> Saturday
		<input checked="" type="checkbox"/> Sunday
Default		
Default		
Start Date/Time		
Use Time Range		
Use Date Range		

Each **Task Selection** can use a restricted set of modifiers to control when they are scheduled to run. Items unavailable for a specific **Task Selection** will be grayed out.

Default
Default
Start Date/Time
Use Time Range
Use Date Range

Note: Not all of the above options are available for each **Task Selection**.

The set of modifiers used for a specific task is selected by the drop down list. The following options are available:

Default

This option requires that the user enter values for only the most necessary properties, such as the "Run Every" property if **Interval** is selected.

Start Date/Time

This option requires the default properties, as well as a Start Date and Time for the selected Task to occur.

Note: This option is not available for the following tasks: **Run Now**.

Use Time Range

This option requires the default properties, the start time, as well as an end time. The task will then begin execution at the start time, and halt execution at the End Time.

Note: This option is not available for the following tasks: **Daily Timer, Run Now, Run Once**.

Use Date Range

This option requires the default properties, a time range, as well as a date range to begin and end execution.

Note: This option is not available for the following tasks: **Run Now, Run Once**.

Days of the Week

Days of the week:

Monday

Tuesday

Wednesday

Thursday

Friday

Saturday

Sunday

This option allows the user to control what days of the week the desired will run. This option is enabled for the **Interval** and **Daily Timer** tasks, as well as **Real-Time** using **Date Range** or **Time Range**.

Task List

The Task List provides information on the currently created tasks. All of these tasks will begin when **Run Tasks** is pressed on the main screen.

Task Selections: 3	Run every	Start Date	Start Time	End Date	End Time	Days of the week	Last Run Time	Next Run Time
Daily Timer			12:00:00 AM			Mo Tu Fr Sa Su	UnKnown	UnKnown
Real-time							UnKnown	UnKnown
Run at ShutDown							UnKnown	UnKnown

Task Selections

This column provides the number of tasks, as well as a description of the task.

Run Every

This column reports how often an **Interval** task is scheduled to run.

Start Date

This column reports the start date that the task will begin.

Start Time

This column reports the start time that the task will begin.

End Date

This column reports the date that the task will stop running.

End Time

This column reports the time that the task will stop running.

Days of the Week

This column lists the days of the week that the task is scheduled to run

Last Run Time

This column lists the last time the task has finished a synchronization.

Note: This does not apply to **Run Now, Run Once**.

Next Run Time

This column list the next time the task will run.

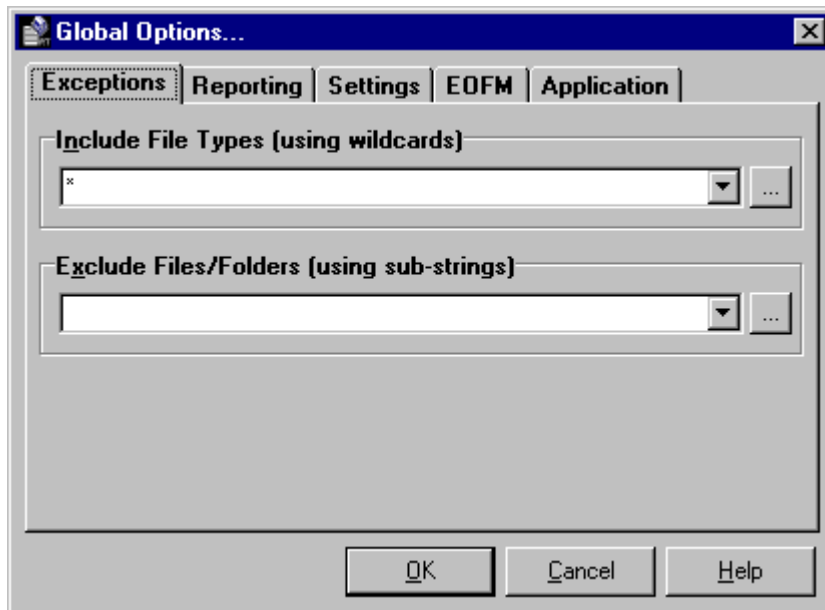
Note: This does not apply to **Run Now**.

1.9 Global Options

1.9.1 Exceptions

(See Next: [Global Options: Reporting](#))

The Exceptions section allows you to Include or exclude specific strings from the current action.

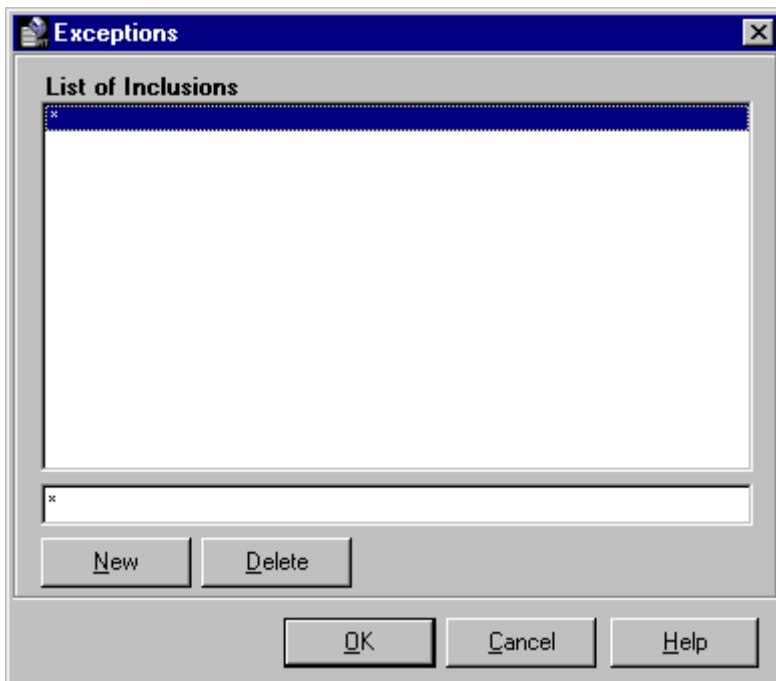


Include File Types (using wildcards)

Use this field to determine which file types will be included as part of synchronization. File Type Inclusions are specified by a star command followed by the file extension (i.e. *.doc;*.wks, etc.). The default setting (*.*) includes all files. Multiple Inclusions will be semi/Colon delimited. Inclusions are not case sensitive, i.e. **A** = **a**.

Include Edit/Add Button

This button will display a 'Exceptions' dialog that will allow you to add inclusions.



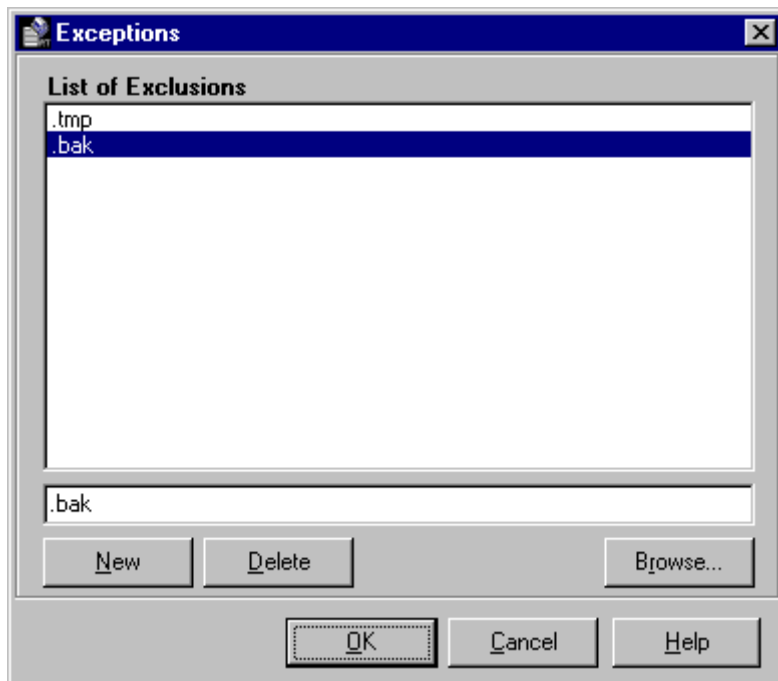
To add an extension, click "New", then type the desired extension into the field located at the bottom of the dialog. Repeat this process for each desired file type. Inclusions can be deleted by selecting them from the list and clicking the "Delete" key at the bottom of the dialog box. Once you have finished, click the "OK" button. The dialog will close and all of the Inclusions you have specified will automatically appear in the Include File Types field in the proper format (separated by semi/Colons).

Exclude Files/Folders (using sub-strings)

Through this field, files can be selectively excluded from synchronization. Exclusions are set by specifying individual characters (i.e. **s**), sets of characters (i.e. **user**), or file extensions (i.e. **.doc**) which, if found within a file name, will exclude that file from synchronization. Multiple characters and strings will be semi/Colon delimited. These settings are not case sensitive, i.e. **A = a**

Exclude Edit/Add Button

This button will display a 'Exceptions' dialog that will allow you to add exclusions.



To add an Exclusion click "New," then type the desired character or string into the field located at the bottom of the dialog. Repeat this process for each Exclusion. Entries can be deleted by selecting them from the list and clicking the "Delete" key at the bottom of the box. You can also use the browse button to select folders to exclude. Once you have finished, click the "OK" button. The box will close and all of the Exclusions you have specified will automatically appear in the Exclude Files field.

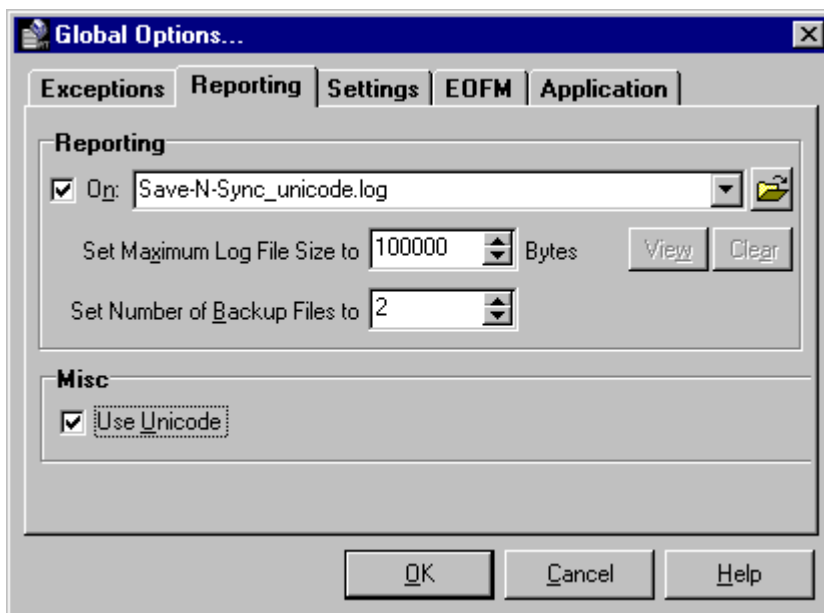
Notes:

- Some of these features can be set via [Command Line Arguments](#).
- These options can be stored per SyncList file in the [Corporate Level](#).
- Inclusions/exclusions can be typed manually, or can be specified using either the Edit/Add Buttons or drop-down lists.
- You can use the exclude field to exclude specific folders from synchronization by specifying a folder name in file path format, i.e. **\TEMP** or **C:\My Documents** (these examples will exclude any folder path that contains these strings including sub-folders)
- Files and/or Folders can be dragged and dropped from MS Windows Explorer into these fields and into the 'Exceptions' dialog box.
- The drop-down lists will be dynamically populated with inclusions/exclusions, as they are set.

1.9.2 Reporting

(See Next: [Global Options: Settings](#))

The Reporting section allows you to turn On/Off reporting, select, browse for and view the selected log file.



Reporting

Selecting and turning this option On/Off will enable/disable log file reporting. Once checked, select a Log File by typing the file path into the field provided, or by using the Select Log File Button. By default, the log file field will use the path in which the application has been installed: in most cases this will be 'C:\Program Files\Application Name' and will assume a default log file name such as Save-N-Sync.log.

Select Log File Button

This button opens a "Select Directory" dialog box: once this box has opened, locate your chosen Log File directory, select it using the left mouse button, and click "OK."

View Log File Button

When this is selected the log file will be displayed in the default text editor.

Clear Log File Button

When this is selected the log file will be cleared.

Set the Maximum Log File Size to x Bytes

Allows you to specify the maximum size of the log files to be created.

Set Number of Backup Files to x

Allows you to specify the amount of backup log files to be created.

If you set the number of backup log files to 0 then at the time your log file reaches its maximum size it will be deleted and recreated on the next log entry. If you set the number of backup log files to a value of 1..n then when your log file reaches its maximum size it will be renamed to a file with the extension .bak plus the number backup the file is.

Example: Setting the number of backup log files to 2 will produce the following log files:

LogFileName.log (newest information)

LogFileName.bak1 .

LogFileName.bak2 (oldest information)

Misc - Use Unicode*

Option to enable/disable the including of unicode files, folders and reporting during the selected Action.

Notes:

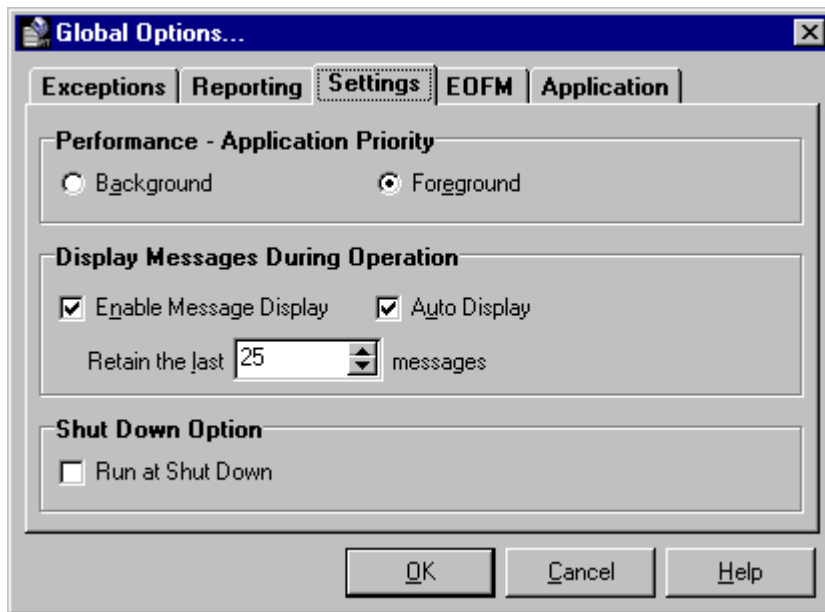
- Some of these features can be set via [Command Line Arguments](#).
- These options can be stored per SyncList file in the [Corporate Level](#)

- The drop-down lists will be dynamically populated with log file names, as they are set.
- The log file name will be appended with the post fix '_unicode' if the 'Use Unicode' option is selected (only available under Windows NT/2K).
- Files can be dragged and dropped from MS Windows Explorer into these fields and into the 'Reporting' field.
- *This option is not available in the [Standard Level](#) or under Windows 9x/Me.

1.9.3 Settings

(See Next: [Global Options: EOFM](#))

The Settings section allows you to set Performance and Message options.



Performance - Application Priority

This option give you the ability to set the Application Priority to Background or Foreground. Setting the Application Priority to Background will allow for other applications to have a higher Priority then Save-N-Sync. Setting the Application Priority to Foreground will allow Save-N-Sync to have the same Priority as other applications, this is the default setting.

Display Message During Operation - Enable Message Display

Selecting this option will store messages in a dialog that can be accessed and displayed from the interface, view menu and from the tray icon.

Display Message During Operation - Auto Display

Selecting this option will automatically display the Message Dialog when messages are added to it.

Display Message During Operation - Retain Last x Messages

Allows you to specify the number of Messages to retain in the Message Dialog.

Run at Shut Down

This schedules Save-N-Sync to synchronize selected directories when the machine is shut down or logged off. .

Notes:

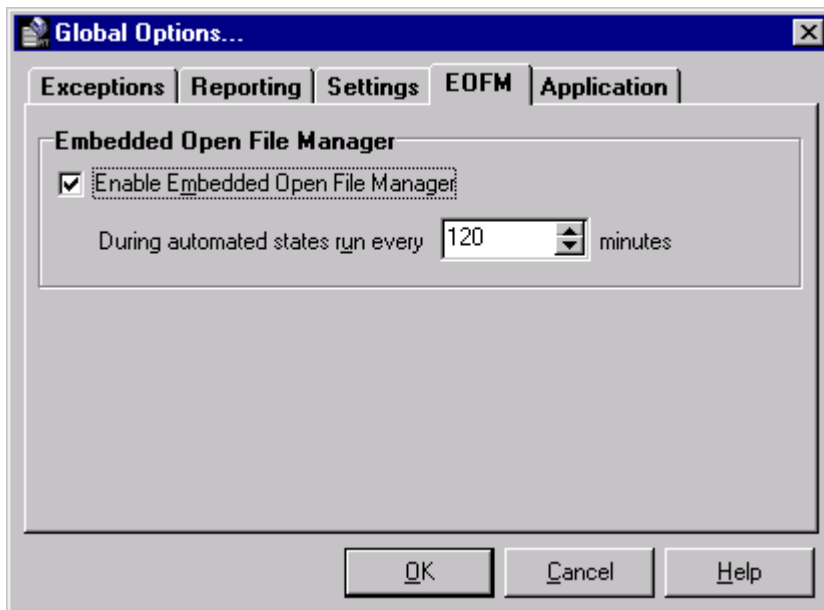
- Some of these features can be set via [Command Line Arguments](#).
- These options can be stored per SyncList file in the [Corporate Level](#).

1.9.4 EOFM

(See Next: [Global Options: Application](#))

EOFM is an Optional [Add-on](#) package to Save-N-Sync Standard and Corporate for Windows 2000/NT/XP Operating Systems. Please check your registration and sales information to see if you need EOFM in your scenario.

The EOFM options allow for the configuration of the Embedded Open File Manager. When Save-N-Sync attempts to synchronize a file that cannot be accessed through normal means, the Open File Manager can be used to get access to the file.



Enable Embedded Open File Manager: This will enable the EOFM feature, which is an [optional add-on package](#) that allows Save-N-Sync full access to open and locked files, such as database and system files.

During automated states run every x minutes ([Corporate Level Only](#)): This value controls the interval on which Save-N-Sync will use EOFM to gain access to locked files during automated states (such as real-time and/or scheduled task operations). By default Save-N-Sync tries to gain access to all open files with the exception of files with the extensions: .pst, .mdb and .db. To adjust what types of files to treat as partially or fully locked files, please refer to the [Include Open Files](#) command line argument .

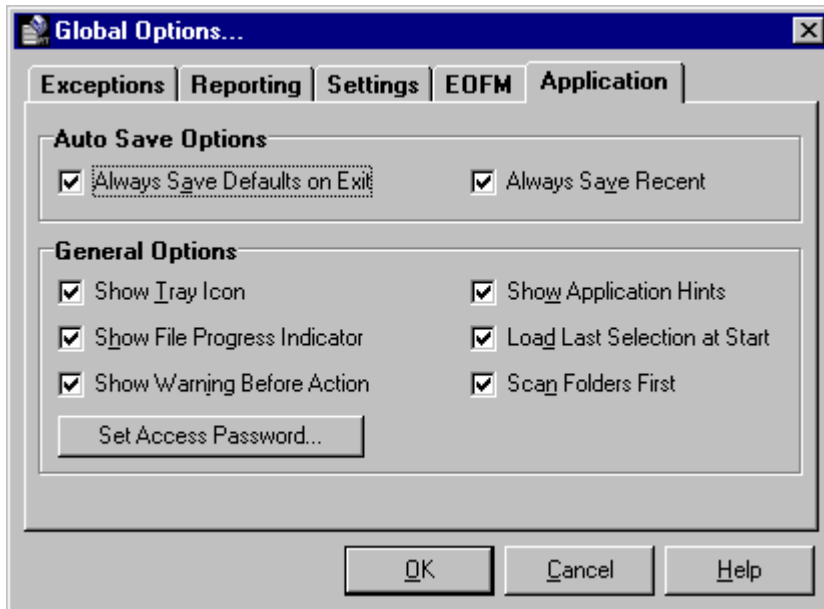
Notes

- EOFM options are only available on Windows 2000/NT/XP Operating Systems. You must purchase the Embedded Open File Manager Option along with Save-N-Sync in order to use these features.
- The file for the source of the update must be local in order to use the EOFM. You may evaluate these features during evaluation by selecting it during installation and/or going to the [Evaluation - Evaluation Selection](#) menu.

1.9.5 Application

(See Next: [Command Line Arguments](#))

The Settings section allows you to set Auto Save and General Options settings.



Auto Save Options - Always Save Defaults on Exit

Selecting this option will automatically save application defaults (height, width, position, etc.) on exit of the application.

Auto Save Options - Always Save Recent

Selecting this option will automatically save recent selections or recent Action Lists depending on the level of product you are using.

General Options - Show Tray Icon

Selecting this option will display the application as a tray icon in the system tray.



If Save-N-Sync is in an automated state, but not in real-time, it will display a maroon RT in the bottom right corner of the icon.

If Save-N-Sync is in an automated real-time state the icon will display a red RT in the bottom right corner of the icon.

Also, when Save-N-Sync is in the process of synchronizing files you will see automation in the tray icon.

General Options - Show File Progress Indicator

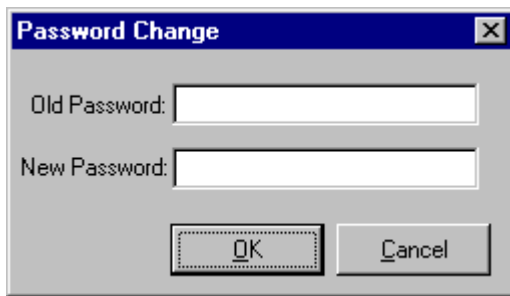
Selecting/unselecting this option will turn the file progress Indicator on or off.

General Options - Show Warning Message Before Action

Selecting this option will show the [Warning Dialog](#) before the start of an action.

General Options - Set Access Password Button

Selecting this button will allow you to specify a password for accessing and terminating the software from the tray icon.

**General Options - Show Application Hints**

Selecting/unselecting this option will turn application hints on or off.

General Options - Load Last Selection at Start

Selecting this option will load the last selection or the last recent Action List at start depending on the level of product you are using.

General Options - Scan Folders First*

Selecting this option will scan the source and target folders before going into an automated state.

Notes:

- Some of these features can be set via [Command Line Arguments](#).
- These options pertain to the overall Application and cannot be stored per SyncList file.
- *This feature is not available in the [Standard Level](#).

1.10 Command Line Arguments

1.10.1 Command Line Arguments

(See Next: [Message Dialog](#))

The applications Command Line Mode offers users the ability to configure a truly "hands-off" installation, where operation and distribution occurs from within an easily manageable, administrative environment. This mode allows Actions to be executed from logon scripts, system batch or command (CMD) files, detailed shortcuts, and shell commands.

Note: For the command line arguments described in this topic, note that attention is paid to punctuation, to the order in which arguments are entered, and that appropriate spaces are used to separate these arguments. Follow the format outlined in the examples provided.

Application Command Line Arguments

The following arguments are appended to the end of the command line followed by a space and forward slash (i.e. /A). A space and forward slash are also used to separate each additional argument (i.e. /A /R).

Note: Before creating Application Command Line Arguments what you might find useful are our [Shortcuts](#):

To create a shortcut from the interface and access the command line you want you can:

- Set up the job you wish to run and run it from the interface.
- Then go to the 'File-Shortcuts' menu item.
- Select 'Add to Desktop' or 'Add to Startup Folder'.
- Create the Shortcut by selecting the OK Button.

- Right click on the Shortcut and select 'Properties'.
- Go to the target field and view/copy the command line string.

Arguments:

/0:file

***SyncList (file = File):** This argument is used to load a Save-N-Sync Synchronization List file.

Examples:

<code>/0:"C:\My SNS\MyBackups.sns"</code>	Full path to file
<code>/0:MyBackups.sns</code>	Will use install directory
<code>MyBackups.sns</code>	Will use install directory (Must be first argument)

Note: This argument is not available in the [Standard Level](#)

/1:fldr

Source Folder (fldr = Folder): This argument is used to select a [source folder path](#).

Examples:

<code>/1:"C:\My Documents"</code>	Folder with spaces
<code>/1:C:\MyDocs</code>	Folder without spaces

/2:fldr

Target Folder (fldr = Folder): This argument is used to select a [target folder path](#).

Examples:

<code>/2:"C:\My Documents Backup"</code>	Folder with spaces
<code>/2:C:\MyDocsBackup</code>	Folder without spaces

/O:n

Operation Mode Action (n = 0-6): This argument is used to select the operation mode [action](#) to be used.

- 0: [Standard synchronization](#) - Synchronize filtered files from source to target folders
- 1: [Bi-directional synchronization](#)** - Synchronize filtered files from source to target and copy any newer

target files back to source folders.

2: Replicate source to target - Synchronize filtered files from source to target folders and delete any files on target that do not have a matching source file

3: Replicate with exact match - Make filtered target files exactly match filtered source files including overwriting any newer files on target.

4: Delete matching target files** - Check filtered target folders for any files that match corresponding source files date, time and size; and delete the file off the target.

5: Delete filtered files** - Delete target files that match filtered criteria.

6: Delete empty folders** - Delete target folders that contain no files.

Examples:

<code>/O:1</code>	Standard synchronization
<code>/O:3</code>	Replicate with exact match
<code>/O:6</code>	Delete empty folders

Note: This argument is limited to 0 and 1 in the Standard Level

/F+ or /F-

Include sub-folders (On/Off): This argument is used to turn On/Off the include sub-folders option.

Examples:

<code>/F</code>	Include sub-folders On
<code>/F+</code>	Include sub-folders On
<code>/F-</code>	Include sub-folders Off

/U+ or /U-

Use Unicode (On/Off): This argument is used to turn On/Off the use unicode option.

Examples:

<code>/U</code>	Use Unicode On
<code>/U+</code>	Use Unicode On
<code>/U-</code>	Use Unicode Off

Note: This argument is not available in the Standard Level or under Windows 9x/Me

/L+file or /L-file

Use Log File (file = file name): This argument is used to turn on and specify a log file to use.

Examples:

<code>/L+Save-N-Sync.log</code>	Reporting On - Use 'Save-N-Sync.log' in the install directory
<code>/L+"D:\My Logs\Save-N-Sync.log"</code>	Reporting On - Use 'D:\My Logs\Save-N-Sync.log'

`/L-"D:\My Logs\Save-N-Sync.log"` Reporting Off - Use 'D:\My Logs\Save-N-Sync.log' as the default

/I:f1;f2..fn

Include (fn = filters using wild cards): This argument is used to build a list of filters to [include](#).

Examples:

`/I:*.doc` Include *.doc files
`/I:*.exe` Include *.exe files
`/I:*.doc;*.exe` Include *.doc and *.exe files

/E:f1;f2..fn

Exclude (fn = sub-strings): This argument is used to build up a list of sub-strings to [exclude](#).

Examples:

`/E:.tmp` Exclude files that contain '.tmp'
`/E:\~` Exclude folders that start with '~'
`/E:.tmp;\~` Exclude files that contain '.tmp' and folders that start with '~'

/P:n

Application Priority (n = 1 or 2): This argument is used to set the [Application Priority](#) to Background (1) or Foreground (2).

Examples:

`/P1` Set the Application Priority to Background
`/P2` Set the Application Priority to Foreground (Default)

/M+ or /M-

Message Dialog: This argument is used to display or not display the [Message Dialog](#) during operation.

A+ or A-

Auto Display: If this option is turned on, the message dialog will be automatically displayed when a message is added to it.

Message Count

Retain Last x messages: This value specifies the amount of messages to be retained in the Message Dialog.

Examples:

`/MA25` Use Message Dialog, Auto Display and Retain last 25 messages
`/M-A25` Do not use Message Dialog, Auto Display and Retain last 25 messages
`/M-A-25` Do not use Message Dialog, do not Auto Display and Retain last 25 messages

/G

General Options: This argument is used to set the following General [Options](#).

H+ or H-

Show Hints: Show Application hints.

L+ or L-

Load Last Selection: Load the last selection upon start of the application.

M+ or M-

Show Message Warning: Show a warning message before executing an action.

P+ or P-

Show Progress: Show progress during application execution.

S+ or S-

Scan First: Scan the source and target folders before going into an automated state.

T+ or T-

Show Tray Icon: Show an icon in the system tray to access the application.

Examples:

`/GHLMPST` All Options On

`/GH+L+M+P+S+T+` All Options On

`/GH-L-M-P-S-T-` All Options Off

Note: The 'Scan First' option of this argument is not available in the [Standard Level](#)

/A

Auto Run: This argument is used to run the selected action automatically.

M

Minimized: This argument is used to run the selected action automatically and minimized.

Q

Quit When Done: This argument is used to run the selected action automatically and then quit when done.

/H

*****Hide Application:** This argument is used to run the selected action automatically and hidden and then quit when done.

Examples:

`/AM` Auto Run - Minimized

`/AMQ` Auto Run - Minimized - Quit When Done

`/AH` Auto Run - Hide Application

/R

Use Real-time Monitoring: This argument is used to turn on the [Use Real-time Monitoring](#) option.

Examples:

<code>/R</code>	Use Real-time Monitoring On
<code>/R+</code>	Use Real-time Monitoring On
<code>/R-</code>	Use Real-time Monitoring Off

Note: This argument is not available in the [Standard Level](#)

/S+s or /S-s

Run Every x secs (s = seconds): This argument is used to turn on and set the [interval](#) timer to run a schedule on.

Examples:

<code>/S+30</code>	Run Every 30 secs On
<code>/S+60</code>	Run Every 60 secs On
<code>/S-60</code>	Run Every x secs Off - Use 60 as the default

Note: This argument is not available in the [Standard Level](#)

/CS+ or CS-

Run at Shut Down: This argument is used to turn on the [Run at Shut Down](#) option.

Examples:

<code>/CS</code>	Run at Shut Down On
<code>/CS+</code>	Run at Shut Down On
<code>/CS-</code>	Run at Shut Down Off

/D[:n]

Target Time Delta: This argument adds n milliseconds to the target file time stamp during comparison.

Examples:

<code>/D:1000</code>	Adds 1 second to the target time stamp during comparison
----------------------	--

/DS[:n]

Shadow Time Range: This argument will use an n millisecond time range for file time stamps during comparison. If the source and corresponding target file time stamps fall in the range then the file time stamps will be seen as equal.****

Examples:

/DS:2000 Uses a 2 second time range during comparison

/V

Apply Millisecond Mask: After synchronization, check source and target file stamps - if they are different, zero out millisecond values and reapply. ****

Examples:

/V Zero out millisecond value in time stamps if difference appears after synchronization

/Y+m or /Y-m

Enable Embedded Open File Manager: This option enables the Embedded Open File Manager (EOFM) option and interval in which to run it on in minutes.

Examples:

/Y+120 Enable and run EOFM every 120 minutes

/Y-180 Disable EOFM - Use 180 minutes as the default interval

Note: This argument is an [Optional Add-on](#)

and is only available on Windows 2000/NT/XP Operating Systems

/Z+ or /Z- or /Z:ext1;ext2..extn

Include Open Files: This option controls how Save-N-Sync accesses a file. If enabled, Save-N-Sync will use a minimum amount of rights needed to access a file. If disabled, Save-N-Sync will not allow other files to write to the file at the same time. If you use a list of extensions then Save-N-Sync will treat all files excluding those extensions as files to Include as Open Files. This argument is useful in specifying which file types should be considered partially or fully locked, in which, you want to only allow Save-N-Sync to synchronize via [EOFM](#) if Save-N-Sync can not get full access to the file.

The default is Include Open Files Off for All Files.

Examples:

/Z- Include Open Files Off for All Files
/Z+ Include Open Files On and use Default exclusions (.pst;.mdb;.db)
/Z+.pst;.doc Include Open Files On for All Files except .pst and .doc files

Notes:

- Any arguments containing spaces must be enclosed by quotes.
- *This argument is only available in the [Corporate Level](#). When using this argument source and target folders, as well as, many other settings/options will be read in from the SyncList file. Also, the preceding '/O:' is not necessary if this is the first argument used.
- **These options are not available during real-time.
- ***This argument is not available during evaluation.
- ****These arguments may be helpful when comparing files on different file systems because

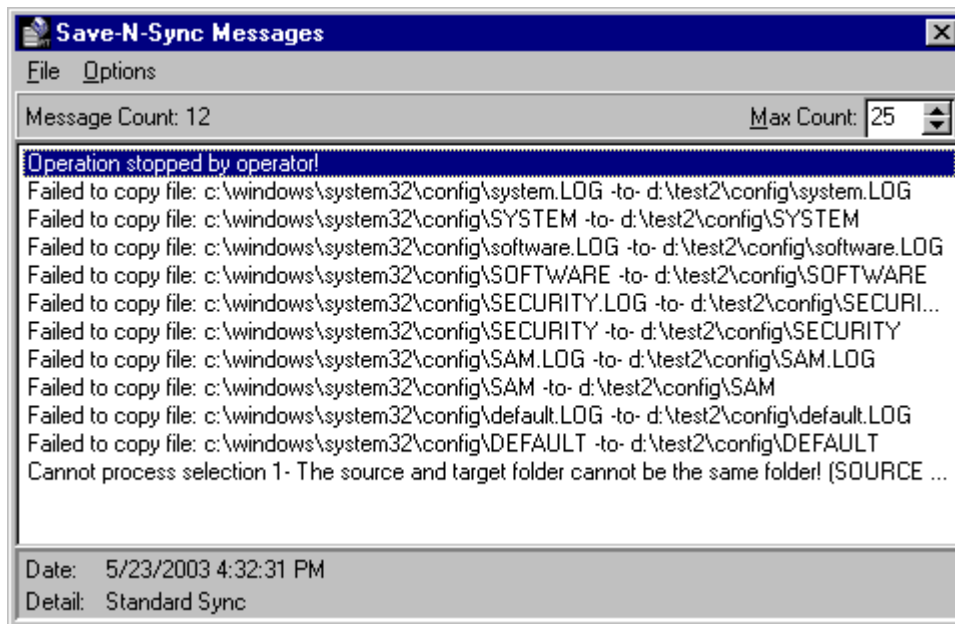
FAT/FAT32 drives do not store mill

1.11 Other Features

1.11.1 Message Dialog

(See Next: [Product Levels](#))

The message dialog displays any messages that have occurred during the current operation. You can specify the Msg Count by selecting this value for the amount of messages to retain. You may also view the date and details for each message by clicking on that message. The options on how and when to display this dialog can also be selected from the [Global Options - Settings](#) screen.



File

Gives you the ability to close the Message Dialog and to terminate the Application.

Options

Allows you to turn On/Off the Auto Display option, turn On/Off the Show Tray Icon Option, Clear the Message List, view/clear the Log File, and Show the Application.

Message Count

This is the number of "unique" messages being displayed. If a message is reported more than once, the number of instances will be specified in the **Detail** field.

Max Count

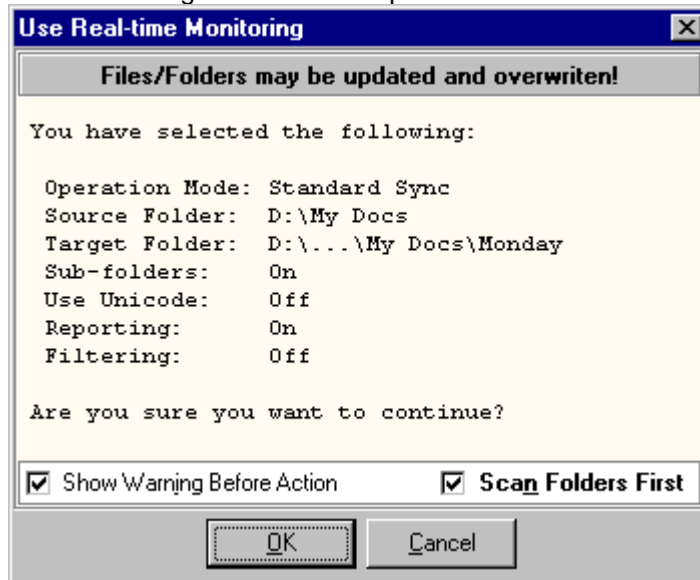
This is the maximum number of messages to keep in the messages window.

Notes:

- Some of these features can be set via [Command Line Arguments](#).
- Some of these features can be set from the [Global Options - Applications](#) screen.

1.11.2 Warning Dialog

The Warning is displayed before starting a Run Now scan, Scheduled scan or Real-time monitoring if the 'Show Warning Before Action' option is checked.



The 'Scan Folders First' option is available before starting Scheduled scans and Real-time monitoring mode and if checked will simulate a Run Now scan before entering one of these automated modes.

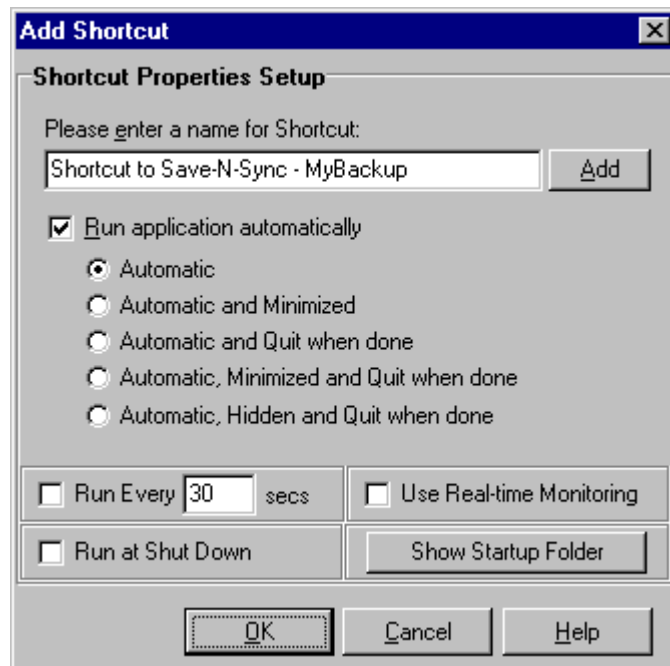
Notes:

- Some of these features can be set via [Command Line Arguments](#).
- Some of these features can be set from the [Global Options - Settings](#) screen.

1.11.3 Shortcuts

To create a shortcut from the interface do the following:

- Set up the job you wish to run and run it from the interface.
- Then go to the 'File-Shortcuts' [Main Menu](#) item.
- Select 'Add to Desktop' or 'Add to Startup Folder'.
- Create the Shortcut by selecting the 'OK' Button.



1.12 Product Information

1.12.1 Product Levels

(See Next: [License](#))

Save-N-Sync comes in different levels, each level contains features from the previous level with additional features.

Product Levels

Standard:

- File and folder synchronization
- Bi-directional synchronization option
- Exceptions: file and folder inclusions
- Exceptions: file and folder exclusions
- Reporting of synchronization activity
- Complete command line operation
- Ability to create shortcuts on the desktop
- Ability to create shortcuts in the startup folder

Corporate:

- All Options from the Standard Level
- Replicate with exact match option
- Delete matching target files option
- Delete filtered files option
- Delete empty folders option
- Ability to configure, save and load SyncList files.
- Real-time file change detection and synchronization

- Allows up to fifteen source-target folder selections
- Ability to synchronize Unicode files and folders
- Interval timer to execute actions on a repetitive basis
- Ability to configure, save and load SyncList files.
- Real-time file change detection and synchronization
- Variable source-target folder path name to customize target selection

Embedded Open File Manager (EOFM) Optional Add-On Package

EOFM is an optional add-on package that allows Save-N-Sync full access to open and locked files, such as database and system files. This feature may be critical in synchronizing these types of files.

EOFM is only available on Windows 2000/NT/XP Operating Systems. Please speak with our sales department if you are unclear as to whether or not EOFM can help in your scenario.

This feature may be enabled during evaluation and is offered as an optional add-on for registrations of Save-N-Sync. To use this option you must select to install it during installation.

To enable this option during evaluation, go to the: [Evaluation - Evaluation Selection](#) Menu

To configure this option, go to the: [View - Options](#) Menu

Product Licensing

All levels of Save-N-Sync can be licensed for single or multiple users and/or single or multiple remote connections.

User Licensing: A single user license, by default, comes with right to install/execute the software on one PC (Server or Workstation) and connect to one remote PC or unlimited local drives. A license must be purchased for each PC where the product will be installed, executed or launched. This also applies to Enterprise installations that run the software off a network file server.

For more information about Product Levels and Licensing please visit our web site:
www.peersoftware.com

To purchase additional Remote Connection licenses, please contact us for additional information.

Note: Peer Software is quite flexible in assembling different combinations of option packages than the ones listed here for enterprise installations with customers' requirements in mind. Please contact us for such requests and for more detail of the Save-N-Sync option packages that are available.

1.12.2 Registration

(See Next: [Main Menu](#))

If this is an unregistered or Evaluation Copy of Save-N-Sync, you can register it with Peer Software, Inc. as a fully licensed copy by providing credit card information via phone or secure Internet registration, or by sending a check or money order to the address below (see included "readme.txt" file for pricing information).

Register online via secure internet credit card registration at:
www.peersoftware.com

Register by phone via credit card by calling:

(631) 979-1770 between the hours of 9:00 AM and 4:00 PM EST

Register by mail, send check or money order to:

Peer Software, Inc.
1363 Veterans Highway, Suite 26
Hauppauge, NY 11788

Product Support

All support of Save-N-Sync will be handled on our website (www.peersoftware.com) support page for this product or by sending email to our support box at support@peersoftware.com.

Information Required:

- Full name (as it appears on the credit card)
- Address (City, State / Province, Country, and Postal Code)
- Phone Number
- Entire Card Number
- Card Expiration Date
- Email Address

(Peer Software will send the Authorization Key required to unlock Save-N-Sync's Evaluation. This key is to be entered during the installation of the software.)

Quantity Discounts - See Web site for more information.

Save-N-Sync may not be commercially distributed or distributed by government agencies including their contractors UNLESS registration fees are paid for by the distributing party.

See License agreement for product redistribution.

Note Regarding Updates: As new updates/changes become available, updated versions of the software will be posted on our Internet Web page "www.peersoftware.com." Check this page periodically to download the latest executables. Your Authorization Key will continue to work with updated versions unless a major release is issued, or Save-N-Sync is installed in a different folder than the previously installed/authorized version.

Entering Your User Information and Password

Evaluation copies do not require user information and passwords.

Registration copies require you to enter a Registration Key into the Register Software Screen.

Register Software Screen

About Save-N-Sync Corporate Edition

PEER
SOFTWARE INC.

Save-N-Sync Corporate Edition

Phone: 631-979-1770 Fax: 631-979-1870
support@peersoftware.com www.peersoftware.com

User Name:

Company:

Key: -

To Access the above screen go to the 'Help - Register Save-N-Sync' Menu item or select the 'Enter Authorization Key' link from the Evaluation About Screen.

Terms And Conditions

Read [License](#) agreement before using this program.

Suggestions, Comments, or Requests for Support:

Peer Software, Inc.
1363 Veterans Highway, Suite 26,
Hauppauge, NY 11788
Phone: (631) 979-1770
FAX: (631) 979-1870
Email: support@peersoftware.com

Copyright 1994-2003, Peer Software, Inc.
Save-N-Sync is a registered trademark of Peer Software, Inc.
Embedded Open File Manager is a registered trademark of St. Bernard Software.
All Rights Reserved. Reproduction in whole or in part without permission is strictly prohibited.

1.12.3 License

(Go Back to: [Contents](#))

YOU SHOULD READ CAREFULLY THE FOLLOWING TERMS AND CONDITIONS BEFORE USING OR DISTRIBUTING THIS SOFTWARE. USING OR DISTRIBUTING THIS SOFTWARE INDICATES ACCEPTANCE OF THESE TERMS AND CONDITIONS.

COPYRIGHT

This software program (hereafter the "Software") and documentation (hereafter the "Documentation") is copyrighted and remains the property of Peer Software, Inc. (Formerly known as TDM, Inc.) All rights are reserved.

LICENSE

Peer Software, Inc. hereby grants you (hereafter the "Purchaser") a limited, non-exclusive license to use the Software and accompanying Documentation contained in the trial ware distribution package (hereafter called the "Trial ware Package") you received. The Trial ware Package consists of copies of the Software and Documentation received via an electronic transfer mechanism or an electronic storage medium including, but not limited to, diskette, hard disk, removable disk, tape or optical devices such as CD-ROM or WORM.

You may use the Trial ware Package on one or more computers provided there is no chance that it will be used simultaneously on more than one computer. If you need to use the Software on more than one computer simultaneously or on a network, please contact Peer Software, Inc. for information about network licenses.

You are not obtaining title to the Software or Documentation or any copyright rights. You may not sublicense, lease, rent, sell, convey, translate, modify, decompile, incorporate into another product, convert to another programming language, reverse engineer or disassemble the Software or Documentation for any purpose.

NETWORK LICENSE

Multiple users on a network (e.g. a LAN) requiring access to the Software and Documentation must purchase a Network License. Two forms of Network Licenses are offered, a Site License and a Concurrent User License. With a Site License, any user who accesses the Software or Documentation requires a user license, regardless of the frequency of use. Once a Site License is purchased, Software and Documentation may be copied to all users who have been licensed.

The Concurrent User License allows the licensed number of users to simultaneously access the Software and Documentation. The Purchaser agrees that he will operate metering software, which restricts the simultaneous number of users to the quantity purchased. The Software and Documentation must be installed on network servers under the control of metering software.

Both Site and Concurrent User Licenses allow installation of the Software and Documentation to any number of servers on any number of geographic sites, limited only by the quantity of licenses purchased.

TERM AND TRIAL PERIOD

You are permitted to use the Software Package for a trial period (hereafter the "Trial Period") of a limited amount of days or uses (whichever comes first) after receipt of the Trial ware Package. After such time, if you continue to use the Trial ware Package, you must register your copy with Peer Software, Inc. Failure to register after the Trial Period constitutes termination of this license. Upon registration, a password (hereafter called the "Password") will be provided to eliminate the registration reminder screen.

This license is effective until terminated. You may terminate it by destroying the Software, Documentation, and all copies thereof. This license will also terminate if you fail to comply with any of the terms or conditions herein. You agree, upon such termination, to destroy all Software, Documentation, and copies thereof.

LIMITED WARRANTY

THE SOFTWARE AND DOCUMENTATION IS PROVIDED "AS IS" WITHOUT WARRANTY OF ANY KIND. PEER SOFTWARE, INC. DISCLAIMS ALL WARRANTIES RELATING TO THIS SOFTWARE,

WHETHER EXPRESSED OR IMPLIED, INCLUDING BUT NOT LIMITED TO ANY IMPLIED WARRANTIES OF MERCHANTABILITY AND FITNESS FOR A PARTICULAR PURPOSE, AND ALL SUCH WARRANTIES ARE EXPRESSLY AND SPECIFICALLY DISCLAIMED.

EXCLUSIVE REMEDY

YOUR EXCLUSIVE REMEDY AND PEER SOFTWARE, INC.'S ENTIRE LIABILITY ARISING FROM OR IN CONNECTIONS WITH THE SOFTWARE, DOCUMENTATION, AND/OR THIS LICENSE (INCLUDING WITHOUT LIMITATION FOR BREACH OF WARRANTY OR INFRINGEMENT) SHALL BE, AT PEER SOFTWARE, INC.'S OPTION, THE REPAIR OR REPLACEMENT OF THE SOFTWARE OR REFUND OF REGISTRATION FEES.

LIMITATIONS OF LIABILITY

IN NO EVENT SHALL PEER SOFTWARE, INC. OR ANYONE ELSE WHO HAS BEEN INVOLVED IN THE CREATION, PRODUCTION, OR DELIVERY OF THIS SOFTWARE SHALL BE LIABLE FOR ANY DIRECT, INDIRECT, CONSEQUENTIAL OR INCIDENTAL DAMAGES, ARISING OUT OF THE USE OR INABILITY TO USE SUCH SOFTWARE EVEN IF PEER SOFTWARE, INC. HAS BEEN ADVISED OF THE POSSIBILITY OF SUCH DAMAGES OR CLAIMS.

Some states do not allow the exclusion of the limit of liability for consequential or incidental damages, so the above limitation may not apply to you.

BACK-UP

You may make as many copies of the Trial ware Package as you need for back-up purposes only.

DISTRIBUTION

You may distribute the Trial ware Package to others via an electronic transfer mechanism or electronic storage media provided that no files are deleted from the Original Distribution Trial ware Package or are modified in any way. Files may be added to the Trial ware Package expressly for the purpose of identifying the party distributing the Trial ware Package. You may also place the Trial ware Package into any archive or compressed format for ease of distribution.

You may not distribute the Password to others under any circumstances.

GENERAL

This agreement shall be governed by the laws of the state of New York and shall inure to the benefit of Peer Software, Inc. and any successors, administrators, heirs, and assigns. Any action or proceeding brought by either party against the other arising out of or related to this agreement shall be brought only in a STATE or FEDERAL COURT of competent jurisdiction located in Suffolk County, New York. The parties hereby consent to appear in person in jurisdiction of said courts.

2 Main Menu

(See Next: [Tool Bar](#))

The menu allows you to access all necessary functions, actions and options used by the application.

Standard



File View Action Help **Evaluation**

Corporate

File View Tasks Action Help **Evaluation**

File

Gives you the ability to save application settings, select recent source-target folder selections, add [Shortcuts](#) to the Desktop and/or Startup Folder and to exit the application. Also, in the [Corporate Level](#) the menu will allow for the saving, opening and reopening of recently used SyncList files.

View

Allows you to view/hide the different sections of the application interface, view/clear log files and allow access to the [Global Options Dialog](#) and [Message Dialog](#).

Tasks (Corporate Level Only)

Allows you to view, run, and create tasks to run. It also offers "Quick Tasks" that add commonly used tasks to the task list.

Action

Allows you to choose the desired mode: Standard, Bi-directional, Replicate, Run at Shut Down, etc. that is available in your version.

Help

Allows you to access this Help file, Product Level Information, our Website, the About Screen and the [Register Software Screen](#).

Evaluation

During Evaluation, this item allows you to select the Level of Evaluation, Product Level Information Dialog, and to turn On/Off the option to display the Evaluation Level Selection Dialog at the start of the application.

Notes:

- Some options/settings are not available or are disabled based on the [Product Level](#) and/or Windows Platform the software is installed on.

Index

- A -

Access Password 21
Action 36
Action Bar 4
Action Description 4
Action Menu 29, 36
Action Selection 4
ActionList 22
Active File 9
Active File Display 9
Active File Size 9
Add Task 11
Add/Copy Button 5
Always Save Defaults on Exit 21
Always Save Recent 21
Application Help 2
Application Priority 19, 22
Apply Millisecond Mask 22
Arguments 22
Auto Display 19, 22
Auto Run 22
Auto Run - Hide Application 22
Auto Run - Minimized 22
Auto Run - Minimized - Quit When Done 22
Auto Run - Quit When Done 22
Auto Save Options 21

- B -

Background 19
Backup log files 17
Batch Files 22
Bi-directional synchronization 4, 22

- C -

Checked 9
Clear Log File Button 17
Command (CMD) files 22
Command Line Arguments 22
Command Line Arguments via Shortcuts 29, 36
Connection Licensing 31

Contents 2
Corporate 31
Creating a Shortcut from the Interface 30
Creating Command Line Arguments via Shortcuts 29, 36
Creating Shortcuts 29, 36
Current Status 9

- D -

Daily Timer 11
Days of the Week 11
Delete Button 5
Delete empty folders 4, 22
Delete filtered files 4, 22
Delete matching target files 4, 22
Delete Task 11
Deleted 9
Description 5
Desktop: 31
Discounts 32
Display Message During Operation 19
Display Options 22
Display warning 30
Drag and Drop 5, 15, 17, 19, 21
During automated states run every x minutes 20
Dynamic archives 5
Dynamic synchronization based on date 5
Dynamic synchronization based on logged on user or machine name 5
Dynamic synchronization based on personal folders or other variables read in from the registry 5

- E -

Edit Button 5
EditButton 15
Elapsed 9
Elapsed Time 9
Enable Auto-Description 5
Enable Embedded Open File Manager 20, 22
Enable Message Display 19
End Date 11
End Time 11
EOFM 20
Evaluation 32, 36
Exclude 22
Exclude Edit/Add Button 15

Exclude Files 15
 Exclude Files/Folders (using sub-strings) 15
 Exclude Filters 15
 Exclude Folders 15
 Exclude sub-strings 15
 Exit Application 29, 36

- F -

File 29, 36
 File Menu 29, 36
 File Progress Indicator 9
 File Status 9
 File types to always use EOFM on 22
 Files Added 9
 Files Checked 9
 Files Excluded 9
 Files Updated 9
 File-Shortcuts 30
 Filtering 15
 Folder Display 9
 Folder Selection 5
 Folder Selection List 5
 Folders Checked 9
 Folders Created 9
 Folders Excluded 9
 Foreground 19

- G -

General Options 21, 22

- H -

Help 2, 36
 Help Menu 29, 36
 Hide Application Sections 29, 36

- I -

Include 22
 Include Edit/Add Button 15
 Include File Types 15
 Include File Types (using wildcards) 15
 Include Files 15
 Include Filters 15
 Include Folders 15

Include Open Files 22
 Include Sub-folders 2, 5, 29, 36
 Include Sub-Folders (on/off) 22
 Include wildcards 15
 Interval 11
 Inteval Schedules 11, 22

- L -

Last Run Time 11
 License Information 34
 Licensing 31
 Load Last Selection at Start 21
 Log File Selection 17, 19, 21
 Logon Scripts 22

- M -

Maximum Log File Size 17
 Maximum log file size selection 17
 Menu 29, 36
 Message Count 9, 22
 Message Dialog 21, 22, 29
 Message Display 19
 Message During Operation 19
 Millisecond Mask 22
 Minimized 22
 Misc - Use Unicode 17
 Msg Count 29

- N -

New 2
 Next Run Time 11
 Number of Backup Files 17

- O -

OK Run 11
 Open 2
 Open Button 5
 Open Files 22
 Open Source Button 5
 Open Target Button 5
 Operation Mode Action 22
 Operation Modes 4
 Options 2, 29

Options Menu 29, 36

- P -

Parameters 22
Performance 19
Product Level Information 36
Product Levels 31
Product Licensing 31
Progress Indicator 9, 21
Purchasing 32

- Q -

Quantity Discounts 32
Quit When Done 22

- R -

Real Time 11
Real-time Monitoring 22
Recent Selections 29, 36
Register Screen 36
Registration 32
Registration Information 32
Replicate source to target 4, 22
Replicate with exact match 4, 22
Reporting 17, 19, 21
Reporting Options 17
Retain Last x messages 19, 22
Run at Shut Down 19, 22
Run Every x secs 22
Run Now 2, 29
Run Tasks on Exit 11

- S -

Save 2
Save Settings 2, 29, 36
Scan first 30
Scan Folders First 21, 30
Schedule 11
Scheduled Tasks 11
Scripts 22
Select Log File Button 17, 19, 21
Select Source Button 5
Select Target Button 5

Set Access Password Button 21
Set Number of Backup Files to x 17
Set the Maximum Log File Size to x Bytes 17
Shadow Time Range 22
Shell Commands 22
Shortcuts 30
Shortcuts - Add to Desktop 29, 36
Shortcuts - Add to Startup Folder 29, 36
Show Application Hints 21
Show File Progress Indicator 21
Show Tray Icon 21
Show Warning Before Action 30
Show Warning Message Before Action 21
Source Folder 5, 9, 22
Source Folder Display 9
Source Target Folder Path Variables 5
Standard 31
Standard and Desktop 2, 5
Standard synchronization 4, 22
Start Date 11
Start Date Time 11
Start Time 11
Stop 2
Stop Action 2
Sub-folders 5
Support 32
Swap Source and Target Folders 2, 5, 29, 36

- T -

Target Folder 5, 9, 22
Target Folder Display 9
Target Time Delta 22
Task Selection 11
Time Delta 22
Time Range 22
Time since the current process has started 9
Tool Bar 2
Total Bytes Checked 9
Total Bytes Deleted 9
Total Bytes Updated 9
Tray Icon 21

- U -

UNC paths 5
Unicode 17

Unicode Log File 17, 19, 21
Update Task 11
Updated 9
Updates 32
Use Date Range 11
Use Log File 22
Use Real-time Monitoring 22
Use Time Range 11
Use Unicode 2, 17, 29, 36
Use Unicode (on/off) 22
User Licensing 31

- V -

Variable Paths 5
View 36
View Application Sections 29, 36
View Button 17, 19, 21
View Log File Button 17, 19, 21
View Menu 29, 36
View/Hide Application Sections 29, 36

- W -

Warning Dialog 30
Workstation 31
Workstation and Corporate 2, 5